



Professional Services Procurement Bulletin 2007-11 Oldham County

COUNTY	<i>Oldham</i>
ROUTE	<i>KY 53</i>
DISTRICT	<i>5-Louisville</i>
ITEM NO	<i>5-388.00</i>
PROJECT DESCRIPTION	<i>Widen KY 53 from KY 22 at Ballardsville to I-71. (Phase 1)</i>
PROJECT MANAGER	<i>Aman Rzazvi, P.E.</i>
USER DIVISION	<i>Highway Design</i>
APPROXIMATE FEE	<i>\$600,000.00 Preliminary Engineering. (Phase 1)</i>
PROJECT FUNDING	<i>State Funds</i>
PURPOSE AND NEED	<i>Improve traffic operations, safety and minimize congestion by widening KY 53 from KY 22 at Ballardsville to I-71.</i>
PROJECT LENGTH	<i>Approx. 3.2 miles.</i>
METHOD OF DESIGN	<i>The selected consultant shall utilize the CADD Standards for Highway Plans (version 2.08) policy in the development of the Highway Plans.</i>
DBE REQUIREMENT	<i>None</i>

SCOPE	<i>The selected consultant will conduct preliminary engineering studies to identify appropriate typical section, line and grade, dependable cost estimate. The Consultant will be responsible for the preparation of an environmental overview.</i>
SPECIAL INSTRUCTIONS	<i>If the Department decides to proceed with phase II final design for this project a new advertisement for services will be issued.</i>
AVAILABLE STUDIES	<i>None</i>
PHOTOGRAMMETRIC SERVICES	<i>The department will be responsible for aerial photography and will furnish manuscripts on computer disks in DGN format.</i>
STRUCTURE DESIGN	<i>Department</i>
GEOTECHNICAL SERVICES	<i>Department</i>
TRAFFIC	<i>The Department will provide historical traffic information and any projections needed.</i>
ENVIRONMENTAL	<i>The Consultant will be responsible for the preparation of an environmental overview.</i>
UTILITY DESIGN	<i>Department</i>
MAP	<i><u>Static Map</u> <u>Aerial Map</u> <u>Interactive Map</u></i>

PREQUALIFICATION REQUIREMENTS

ROADWAY DESIGN

- *Rural Roadway Design >\$250,000*
- *Urban Roadway Design >\$250,000*
- *Surveying*

ENVIRONMENTAL ARCHAEOLOGY

- *Prehistoric*
- *Historic*
- *Highway Noise*
- *Air Quality*
- *Cultural Historic*
- *Environmental Document Writing and Coordination*
- *Socioeconomic*

AQUATIC/TERRESTRIAL ECOSYSTEMS

- *Fisheries*
- *Macroinvertebrates*
- *Water Quality*
- *Botany*
- *Zoology*
- *Wetlands*

HAZMAT/UST

- *Preliminary Site Assessment*

PROJECT SCHEDULE & MILESTONES

<i>RESPONSE DATE</i>	<i>July 10, 2007 4:30 p.m. (Frankfort Time)</i>
<i>SELECTION COMMITTEE DATE MEETING</i>	<i>August 1, 2007</i>
<i>PRE-DESIGN CONFERENCE</i>	<i>August 15, 2007</i>
<i>TENTATIVE DEADLINE FOR CONSULTANT FEE PROPOSAL</i>	<i>September 12, 2007</i>
<i>CONTRACT NEGOTIATIONS</i>	<i>October 1, 2007</i>
<i>NOTICE TO PROCEED</i>	<i>December 1, 2007</i>
<i>PRELIMINARY LINE AND GRADE INSPECTION</i>	<i>September 1, 2008</i>

The selected consultant is expected to meet the scheduled milestone dates

EVALUATION FACTORS

- 1. Relative experience of consultant personnel assigned to project team with highway projects for KYTC and/or for federal, local or other state governmental agencies. (10 points)*
- 2. Capacity to comply with project schedule. (10 points)*
- 3. Past record of performance on projects of similar type and complexity. (10 points)*
- 4. Project approach and proposed procedures to accomplish the services for the project. (10 points)*
- 5. Consultant's Kentucky office where work is to be performed. (2 points)*

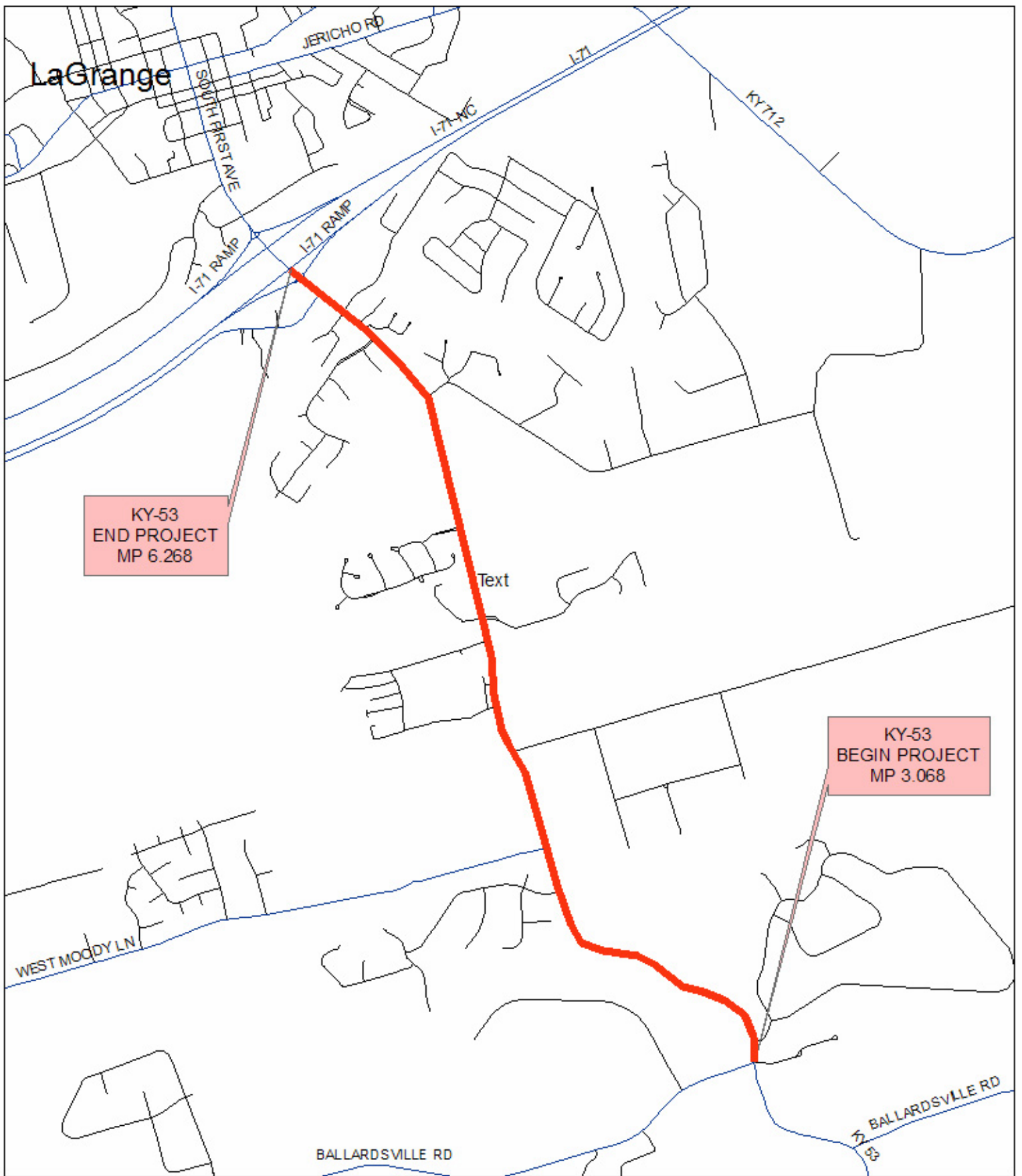
75% - 100% of work accomplished in Kentucky offices - 2 points

26% - 74% of work accomplished in Kentucky offices - 1 point

0% - 25% of work accomplished in Kentucky offices - 0 points

SELECTION COMMITTEE MEMBERS

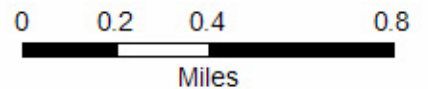
- 1. Ananias Calvin III, P.E., User Division*
- 2. Aman Razavi, P.E., User Division*
- 3. Patty Dunaway, Secretary's Pool*
- 4. Shari Greenwell, Secretary's Pool*
- 5. Ed Dyer, Governor's Pool*

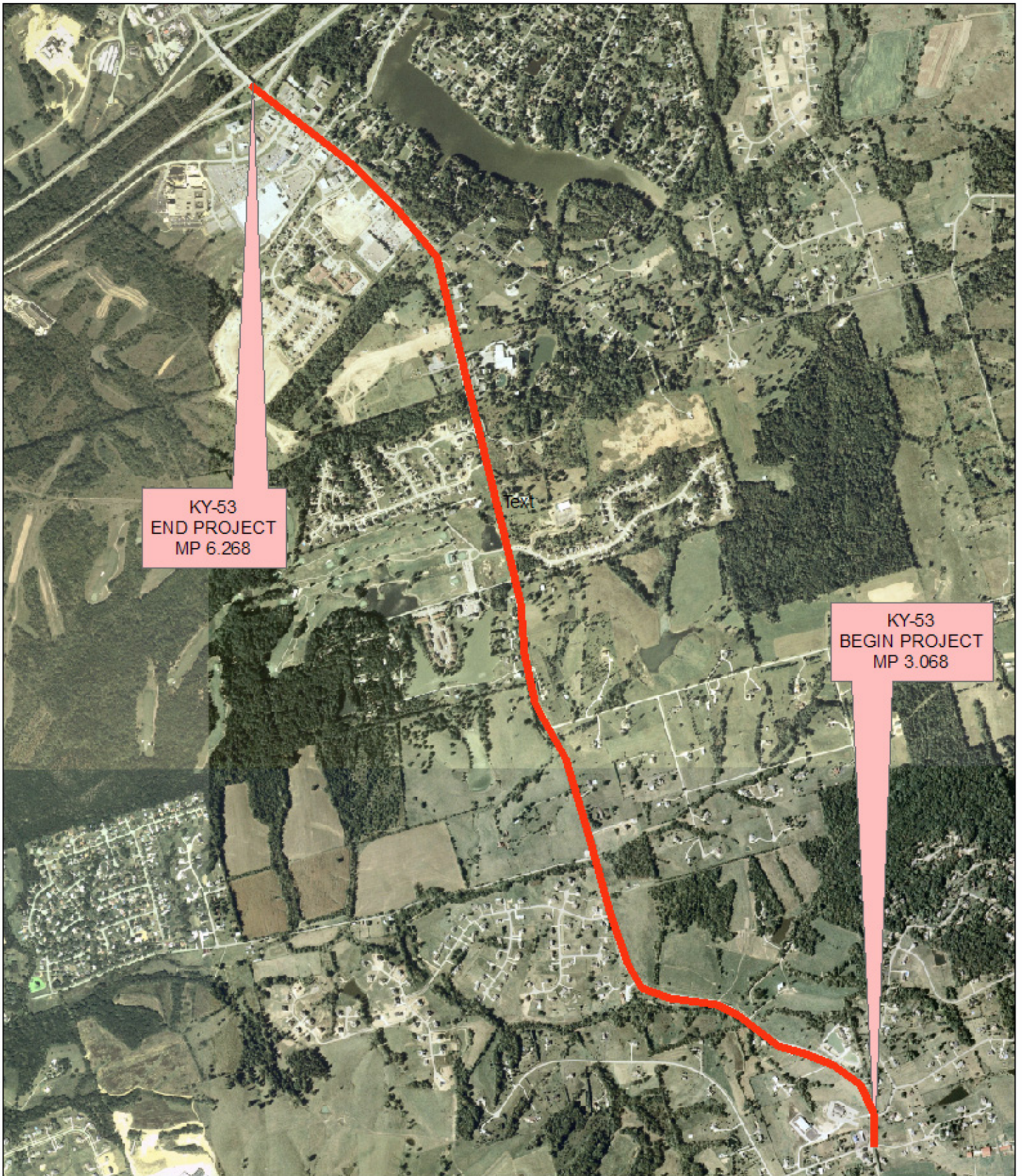


Legend

- d5strd arc
- d5loca arc

ITEM 05-388.00
KY-53
OLDHAM COUNTY, KY





KY-53
END PROJECT
MP 6.268

KY-53
BEGIN PROJECT
MP 3.068

ITEM 05-388.00
KY-53
OLDHAM COUNTY, KY



Legend

